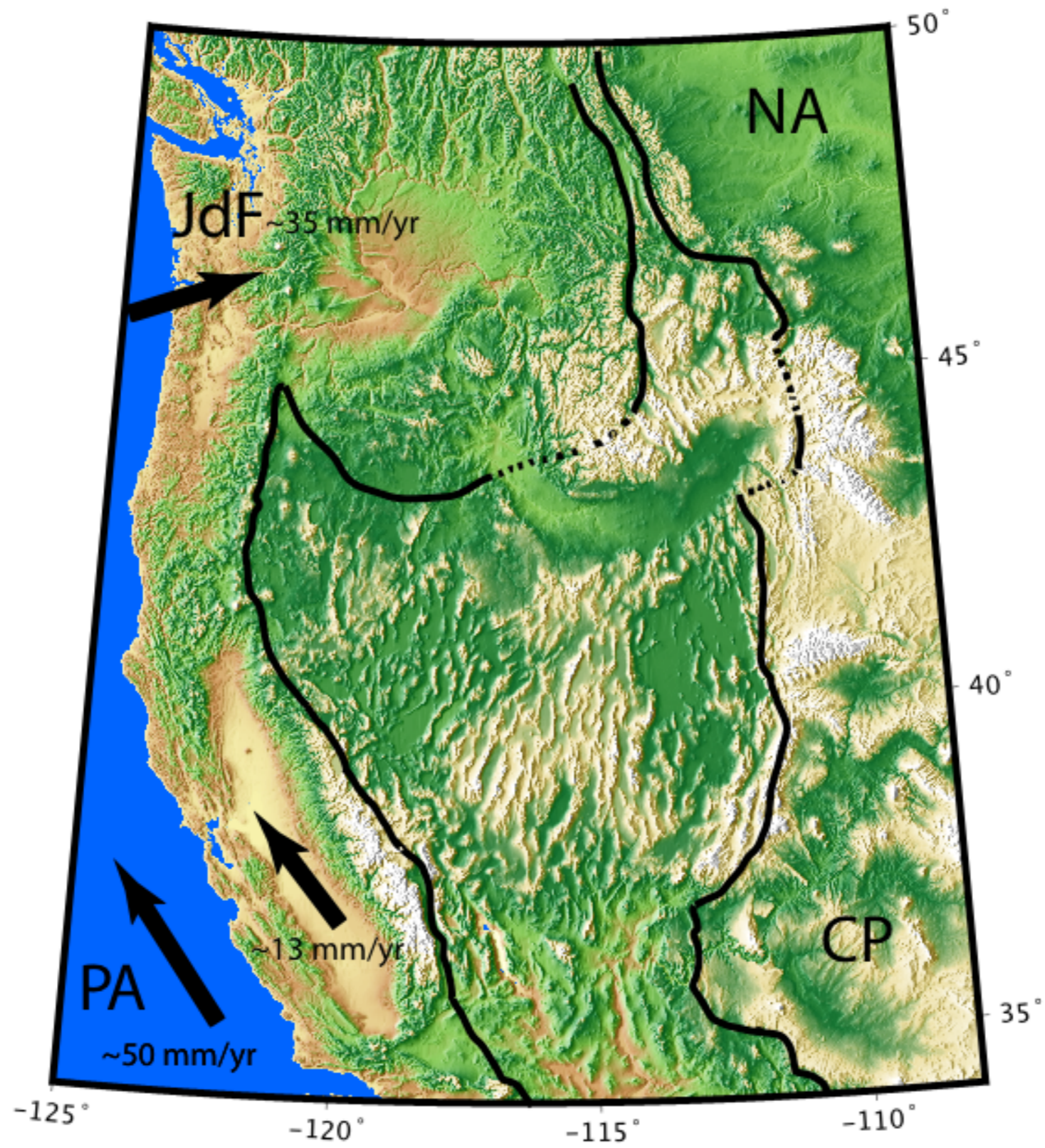


# Geophysical Geodesy

## Tuesday October 4, 2011

- Field trip. Rain! Snow! what do we do? Dress Accordingly. Plan B.
- Problem Set #2 - a quick look
- Discussion of Smith et al, 2004 (Alex)
- Finite dislocations (e.g. Okada formula)
- New Reading:  
Chapter 3 of Earthquake and Volcano Deformation
- Problem Set #4 - Introduction



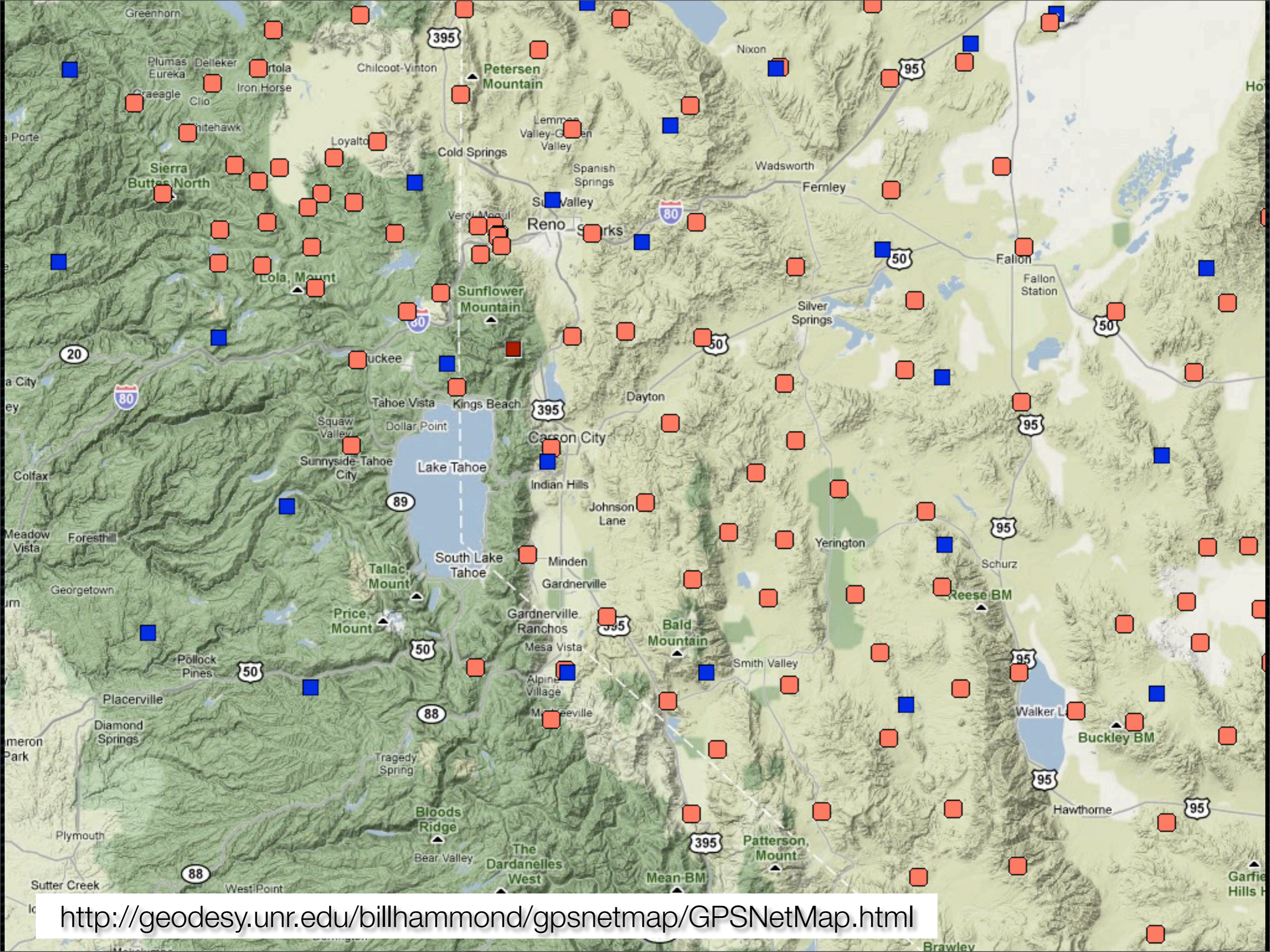






<http://jules.unavco.org/Voyager/Earth>





<http://geodesy.unr.edu/billhammond/gpsnetmap/GPSNetMap.html>



# MAGNET: The Mobile Array of GPS for Nevada Transtension





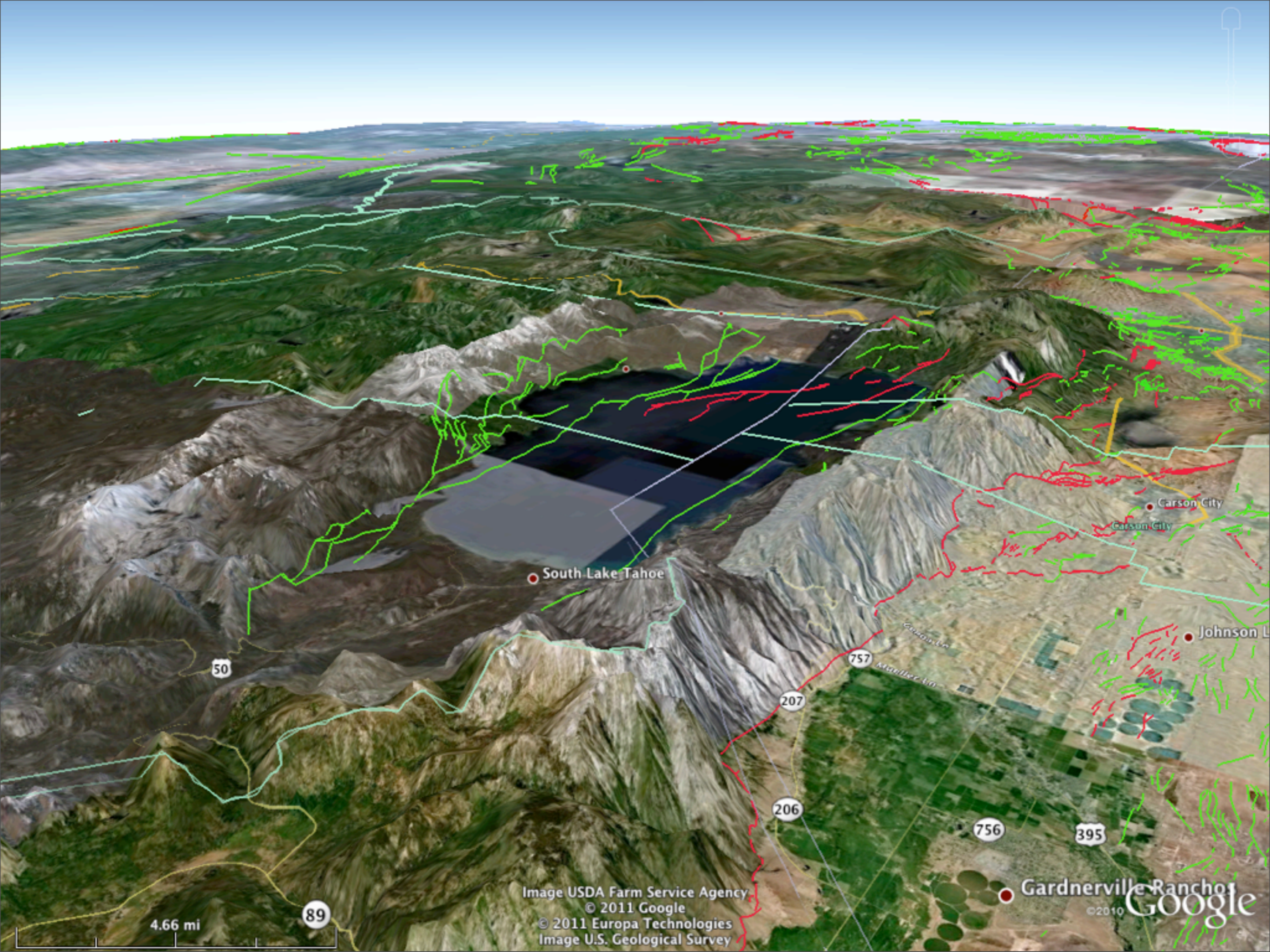


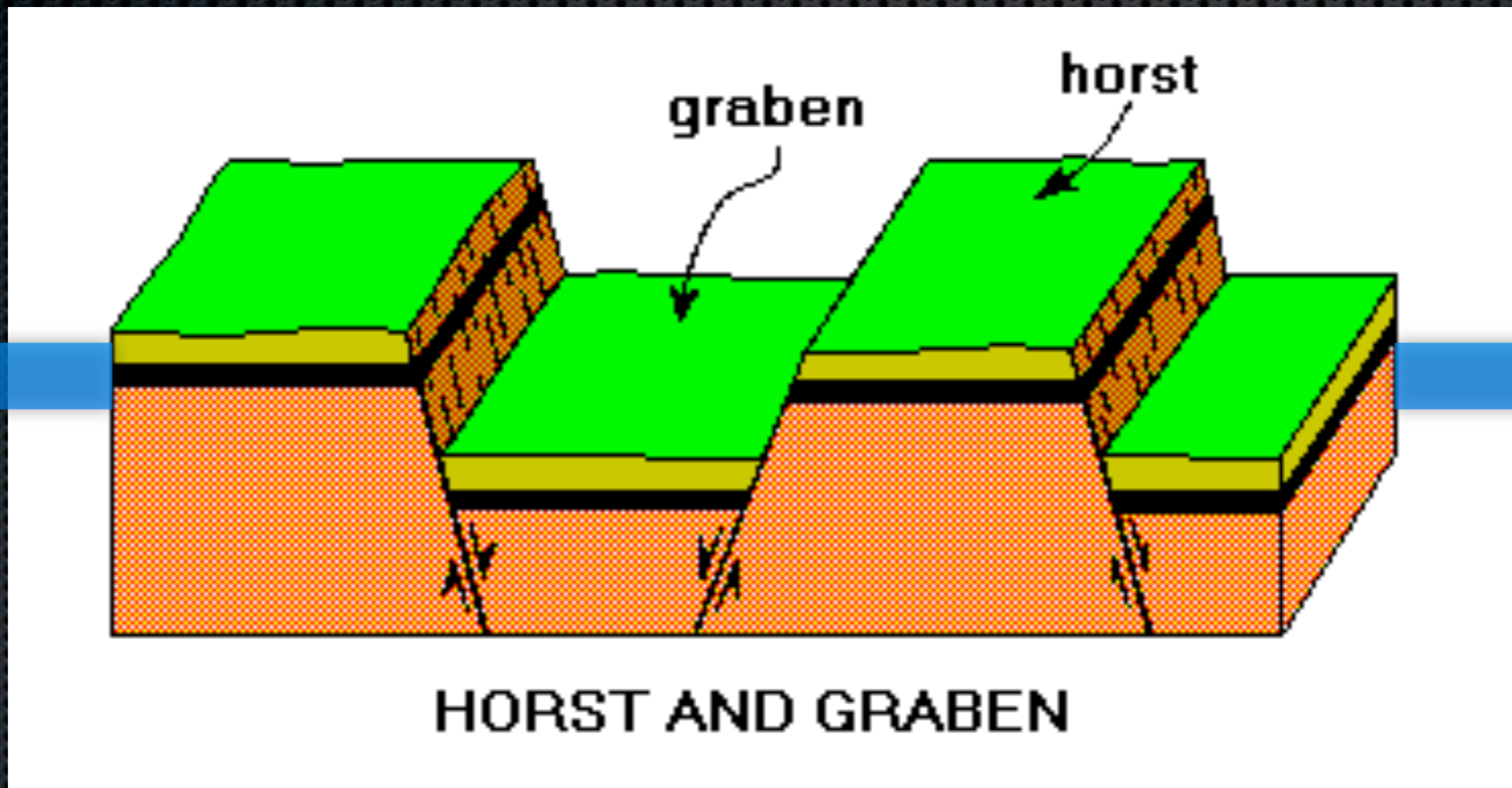
Image USDA Farm Service Agency  
© 2011 Google  
© 2011 Europa Technologies  
Image U.S. Geological Survey

Gardnerville Ranchos  
© 2010 Google

4.66 mi

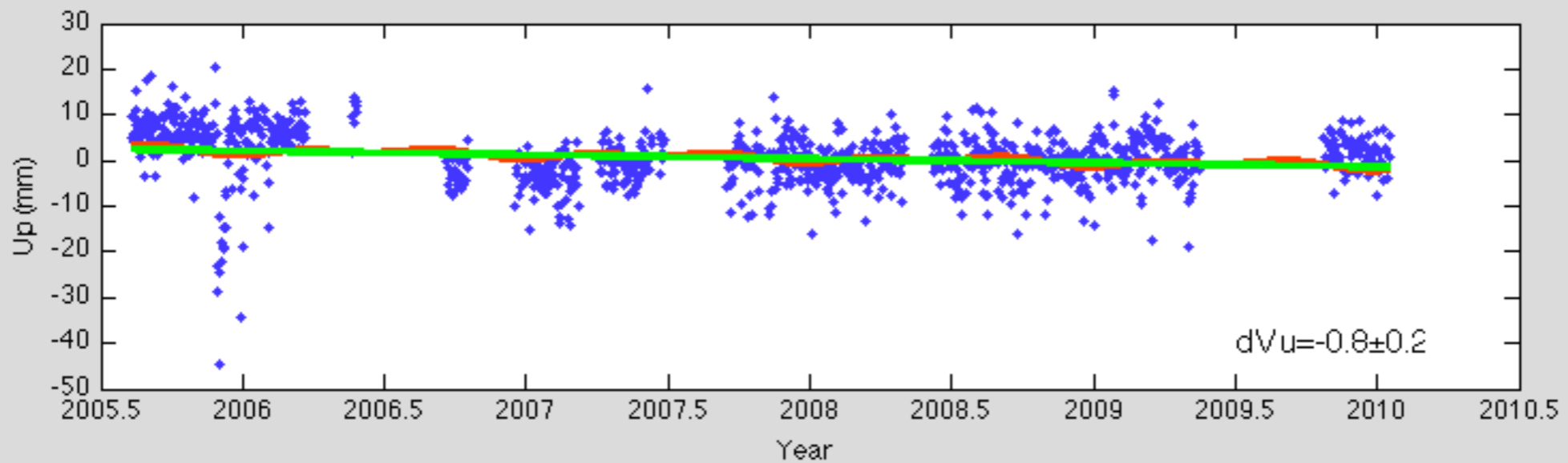
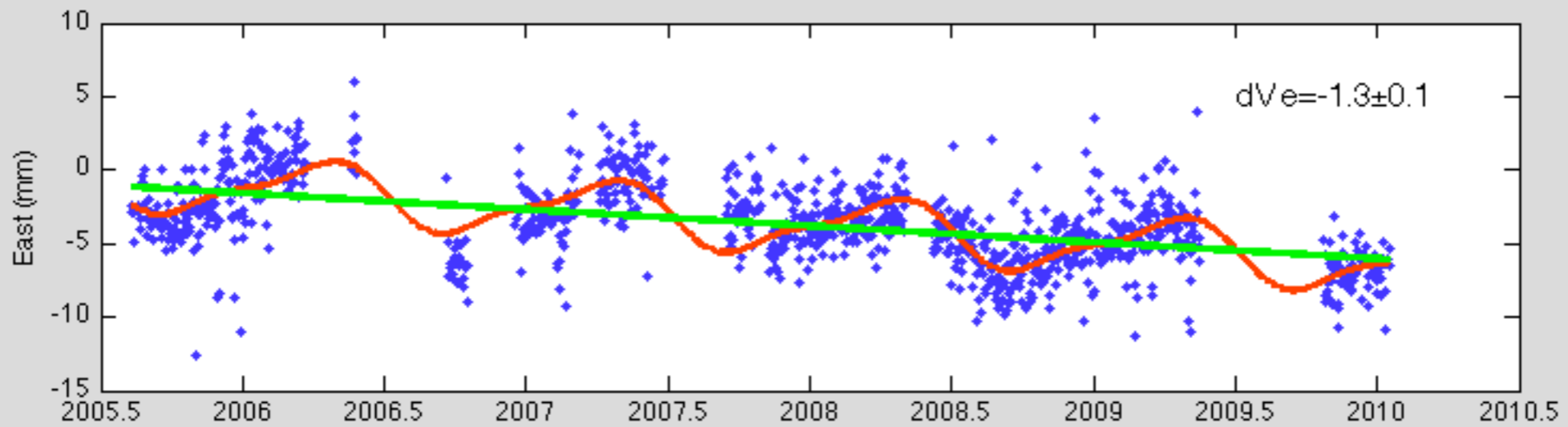
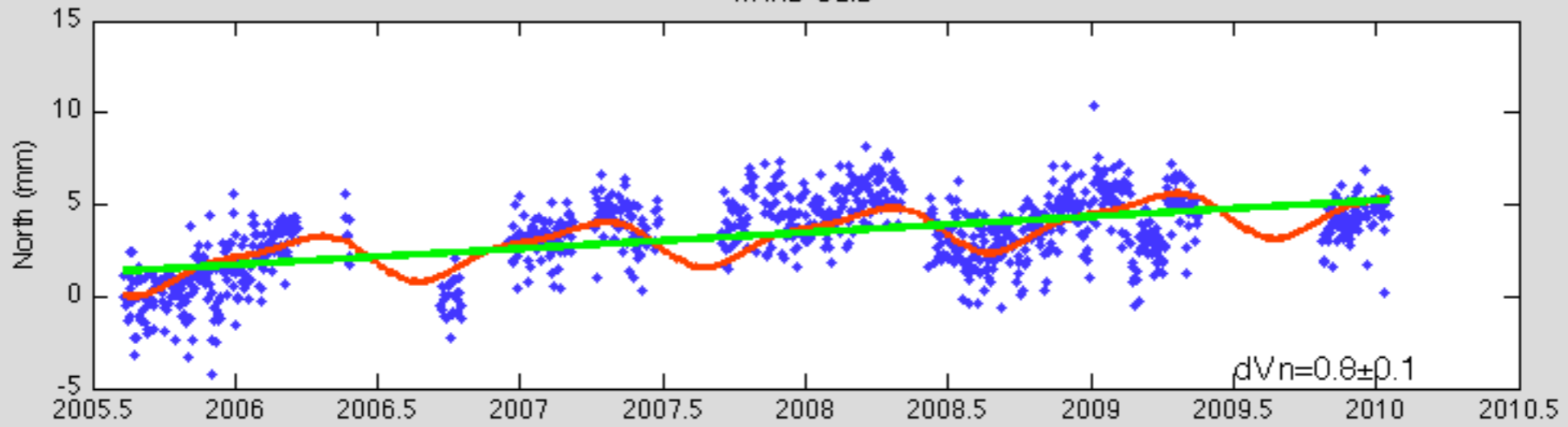


# Stretching the Earth's Crust Makes Mountains





WARD-SLID





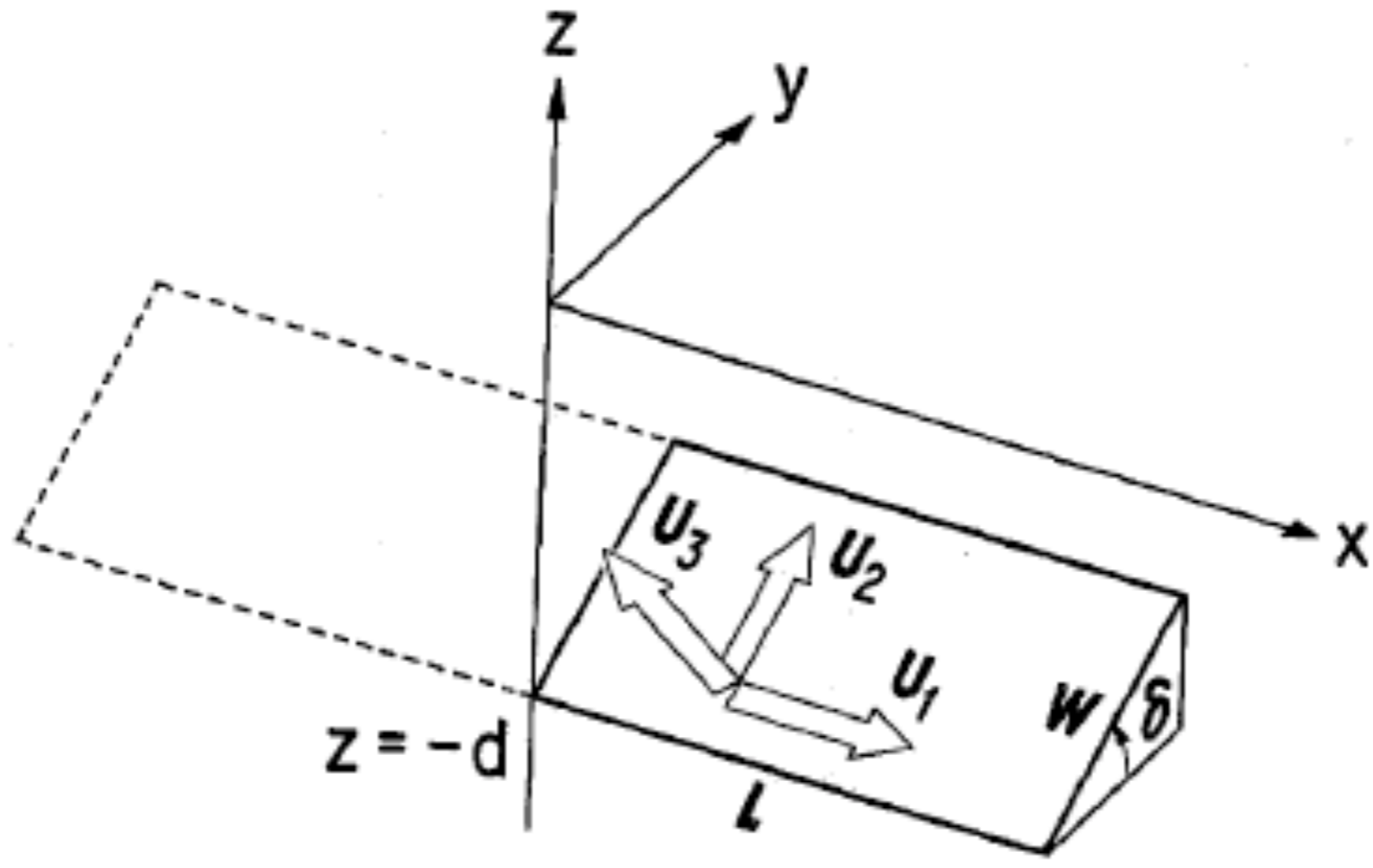


FIG. 1. Geometry of the source model.

Okada, 1985